


# Push Button & Rotary Switch Covers S2151 - S2153

A decorative graphic consisting of a solid red horizontal bar that spans the width of the page. Below this bar, on the right side, there are several horizontal lines of varying lengths and colors, including white and light red, creating a layered, stepped effect.

## Push Button & Rotary Switch Covers S2151 - S2153

Maintenance and production workers often have to perform routine maintenance on machinery, especially during production times. Workers would prefer not to totally shut down the machinery while performing quick, local maintenance. However, good safety practices are needed to ensure the worker is safe from harm. In many instances, machines have push buttons or rotary switches that can cut electrical energy to the local area needing maintenance. Although workers are not locking out the main energy source, preventing accidental energy startup by covering these push buttons and rotary switches is a good safety practice to help prevent injuries.

**Master Lock® has a solution to these situations, the new S2151 & S2153 Push Button & Rotary Switch Covers!**



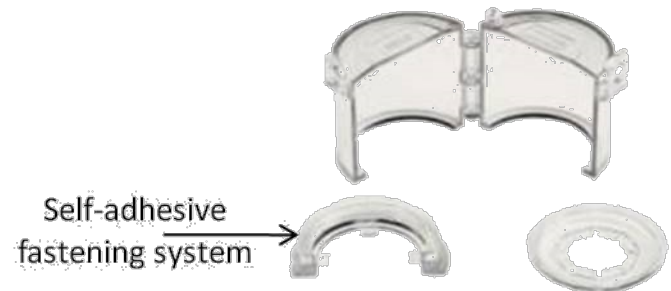
**S2153 Installed Push Button  
and Rotary Switch Cover**



**S2151 Removable Push Button  
and Rotary Switch Cover**

# Push Button & Rotary Switch Covers S2151

- Designed to increase the safety of power isolation
- Used to lock out push buttons and rotary switches from 22.5 mm to 30.5 mm in diameter
- Accommodates buttons up to 50mm diameter and 45mm tall
- Clear base and cover allow visibility of nameplates and labels
- Strong transparent ABS body
- Self-adhesive fastening system
- S2152AST Pack of 12 new install bases allows one S2151 to service multiple switches on same panel



**S2151 Removable Push Button  
and Rotary Switch Cover**



**S2152AST Self-adhesive Install Bases**

## Push Button & Rotary Switch Covers S2153

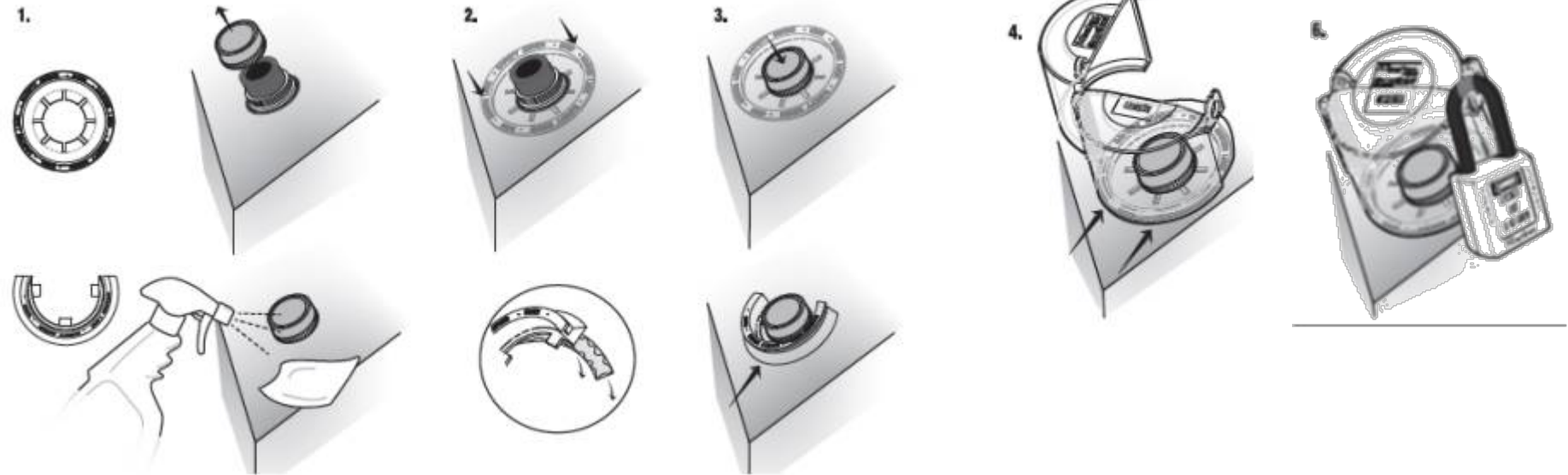
- Captured by the rotary or pushbutton switch bezel
- Fits both 30.5mm and 22.5mm diameter switches
- Clear base and cover allow visibility of nameplates and labels
- Accommodates buttons up to 40mm diameter and 45mm tall



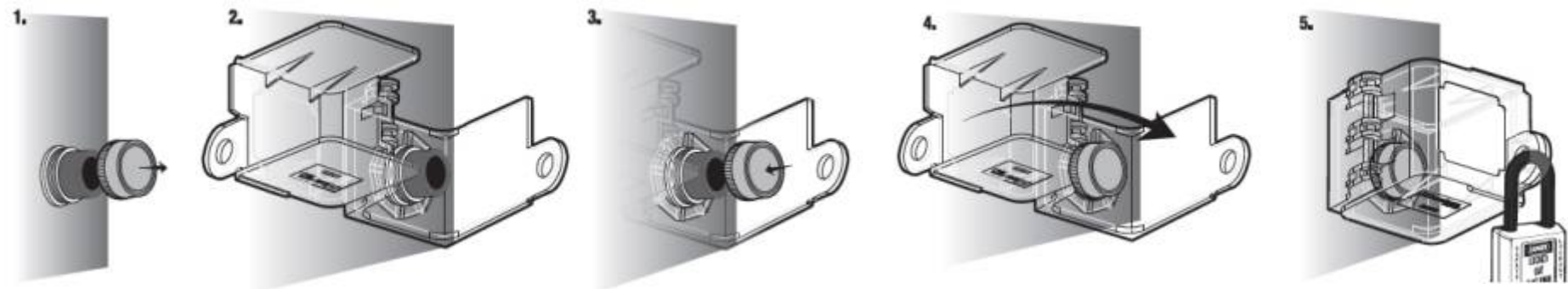
**S2153 Installed Push Button  
and Rotary Switch Cover**

# Push Button & Rotary Switch Covers S2151 - S2153

## Instructions to apply S2151









## Instructions to apply S2153



# Push Button & Rotary Switch Covers S2151 - S2153

## Pricing & Packaging

Images	Product nbr	Description	Images	Product nbr	Description
	S2151	Removable Push Button and Rotary Switch Cover		S2151	Removable Push Button and Rotary Switch Cover
	S2152AST	Bag of 12 new installation bases designed for S2151		S2152AST	Bag of 12 new installation bases designed for S2151
	S2153	Installed Push Button and Rotary Switch Cover		S2153	Installed Push Button and Rotary Switch Cover

## CAUTION

These are not “lockouts,” but instead are “covers”. OSHA allows their use for tasks (see below) that are routine, repetitive, and integral to the production process.

### **Characteristics of these tasks:**

- Short in duration and minimal interruption to the production process
- Minor in nature
- Occur frequently during production
- Usually performed by operator, set-up, maintenance or service personnel
- Do not involve extensive disassembly
- Are predetermined cyclical activities
- Exist even when optimal operating levels are achieved
- Require task specific training for personnel

### **Examples of these tasks:**

- Die or drill bit changes
- Jam clearing
- Conveyor clearing
- Lubrication
- Frequently Asked Questions
- Tool changes
- Minor cleaning
- Adjustments and set-up