

Valve Lockouts

The exclusive, patent pending Master Lock gate and ball valve lockout devices work in difficult applications like tight spaces and insulated pipes.

Rotating Gate Valve Lockouts

Outward/Inward Rotation Allows for Easier Installation & Storage

- Surrounds the valve operating handle to protect against accidental valve opening
- Unique, patent-pending rotating design allows for easier installation in confined space applications
- Center knockout can be removed for rising stem gate valves
- Each size rotates into itself and nests within the next larger size to save space in storage
- Multiple workers can apply their personal safety locks
- Complete with high-visibility permanent safety labels (English, French & Spanish) that can be written-on to identify the responsible person, then erased for the next job
- Tough, lightweight, dielectric Xenoy®* thermoplastic bodies withstand chemicals; perform effectively in extreme conditions [temperature range -50° F (-46° C) to +350° F (177° C)]

Master Lock Model #	Description
480	fits 1" to 3" dia. valve handles
481	fits 2" to 5" dia. valve handles
482	fits 4" to 6.5" dia. valve handles

Master Lock Model #	Description
483	fits 6" to 10" dia. valve handles
484	fits 8" to 13" dia. valve handles
485	1 set of 480-484

*Xenoy® is a registered trademark of General Electric Corporation.



Pressurized Gas Valve Lockout

Fits Pressurized Gas Valves

- Surrounds the valve handle to protect against accidental valve opening
- Patent pending design works with valve guard in place
- Fits virtually all pressurized gas valves up to 3" diameter
- Compact size easily stored when not being used
- Includes Danger labels in English, Spanish, and French
- Accepts any Master Lock or American Lock Safety Padlock
- Works with lockout hasps for multiple worker lockout
- Patent pending

Master Lock Model #	Description
S3910	Pressurized Gas Valve Lockout

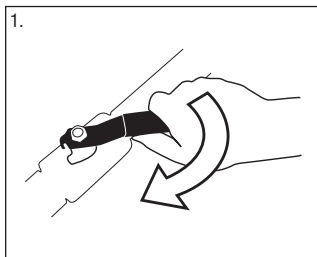


Seal Tight™ Ball Valve Lockout

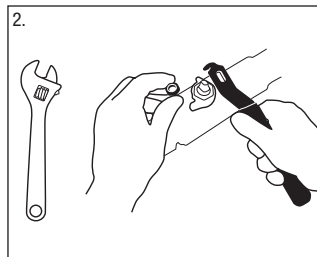
Provides Universal Fit for Valve Applications and Diameters

- Another exclusive Master Lock® Safety Series™ lockout device, the Seal Tight™ device works on virtually all valve sizes and in all applications
- Patent-pending innovative design eliminates the risk of valve reactivation by movement of the handle. With Seal Tight™, remove and store the handle and conceal the valve stem for secure lockout.
- Universal fit – effectively locks out all valves from 3/8" to 4"
- Works in virtually all valve installations – metal and PVC valves, insulated pipes, pipes mounted close to a wall or ceiling, and valves with tight access due to close proximity of other valves or pipes
- Easy to use – simple to apply with an intuitive wrapping strap and locking mechanism
- Lightweight, flexible device is easily carried to the job and then folded for compact storage in safety toolboxes
- Includes write-on erasable labels in English, French and Spanish
- Constructed of durable PVC polyester fabric and HDPE plastic, the Seal Tight Valve Lockout withstands corrosive environments and operates in temperature extremes from -40° to 250°F

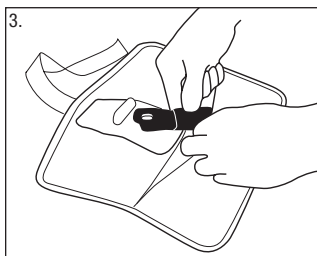
Master Lock Model #	Description	For Valve Diameters of:
468L	Seal Tight™ Valve Lockout, 11-1/2" H x 12-3/4" W x 2-1/2" D	3/8" to 4"



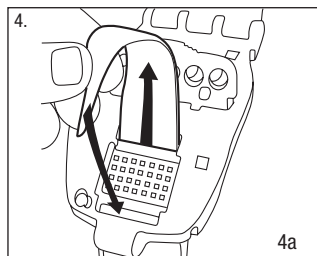
1. Close Valve



2. Remove handle

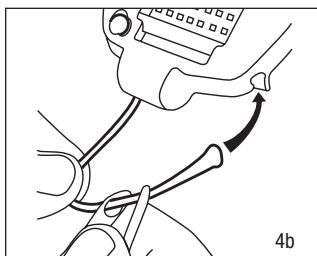


3. Place handle in zippered pouch

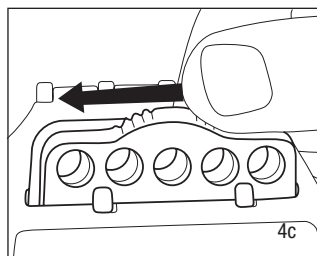


4. Apply wrap on valve.

a. Wrap strap around valve and thread through locking mechanism



4b. Thread zipper tie through both zipper tabs and place end in pocket in locking mechanism.



4c. Close locking mechanism, slide lock latch closed and apply padlock.

THE solution that positively shuts off energy



Fits Insulated Pipes

Lightweight Innovative Design



468L

Easy to Use Universal Fit



Fits Tight Clearances

